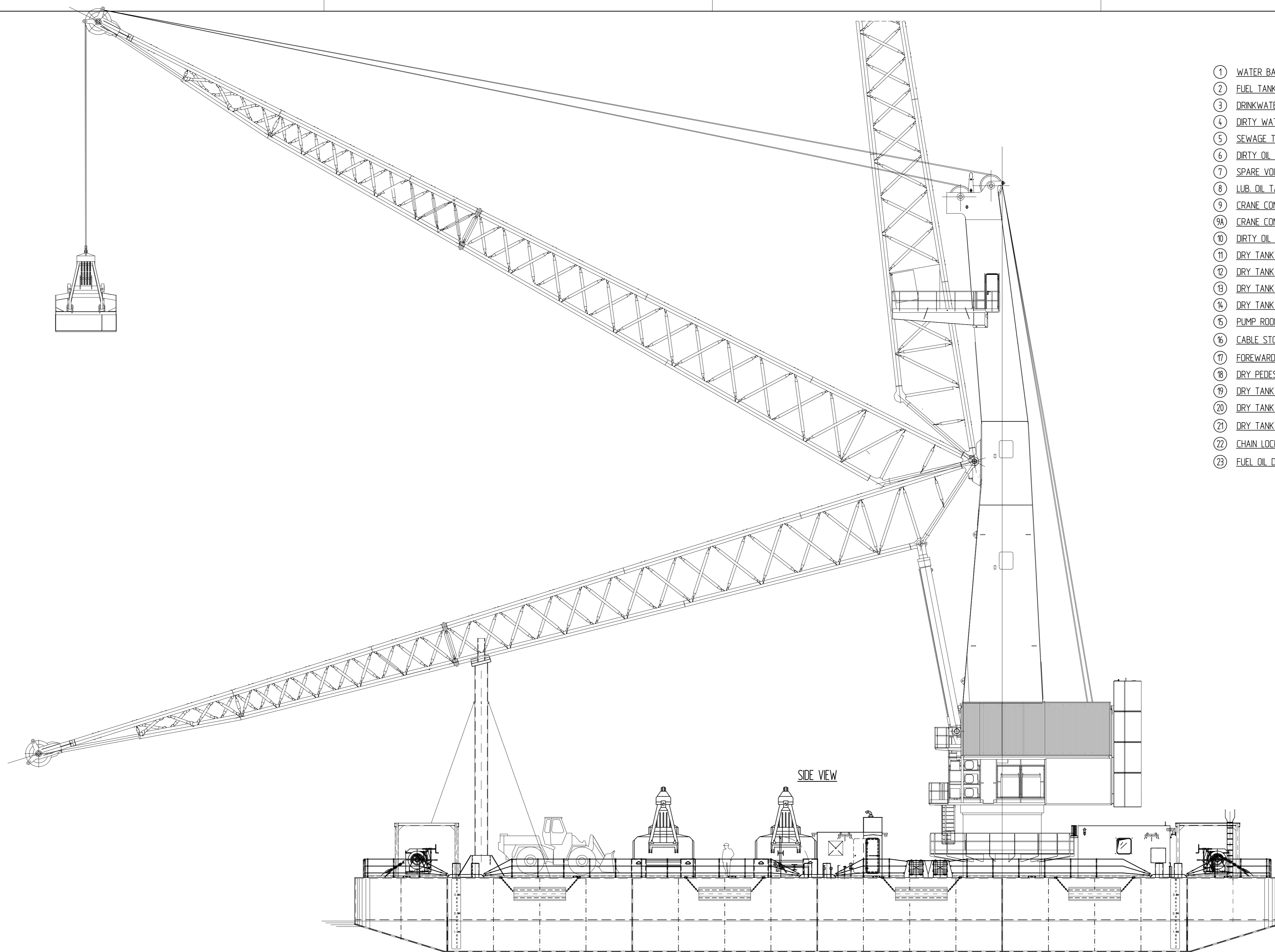


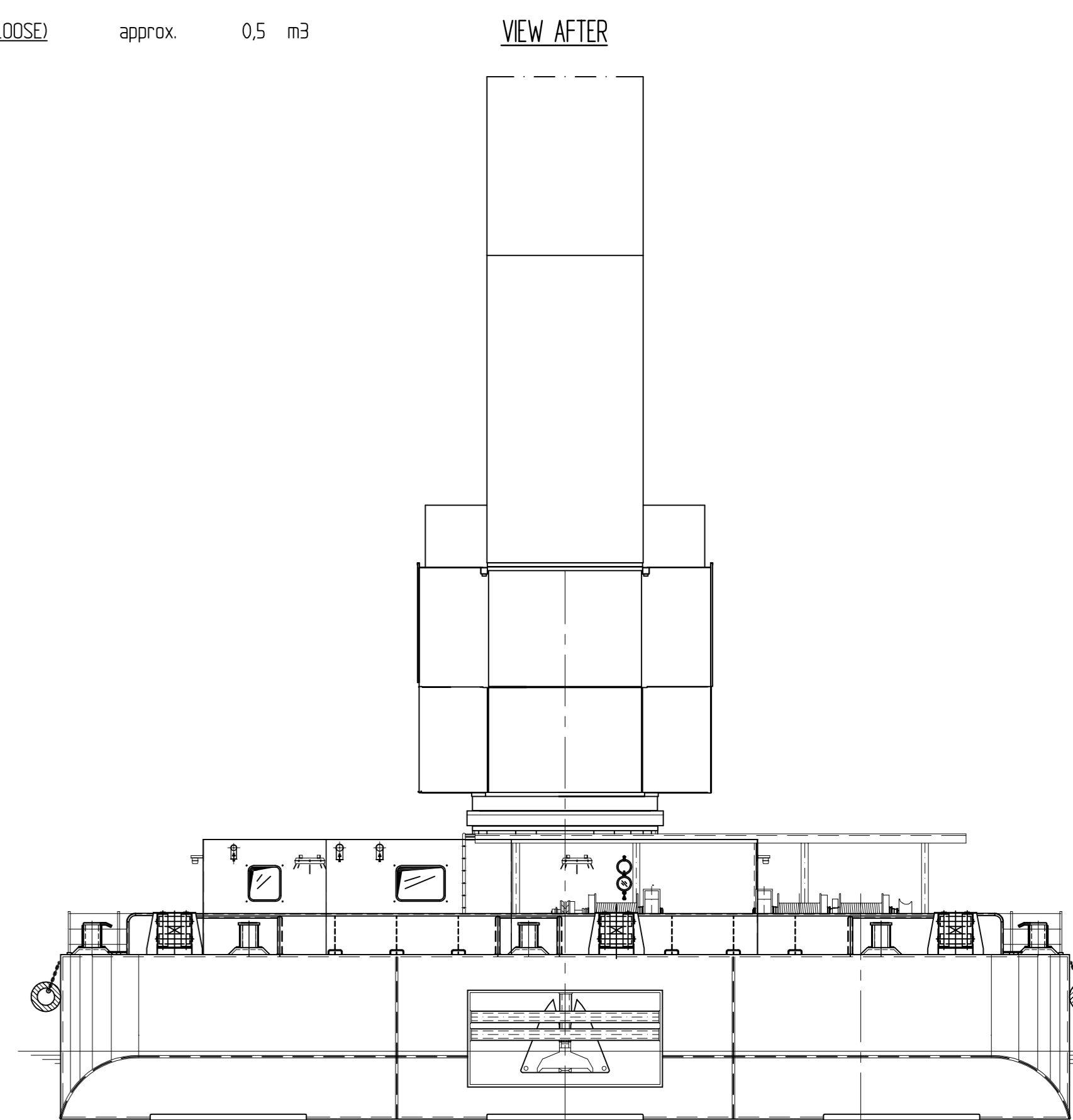
FRONT VIEW



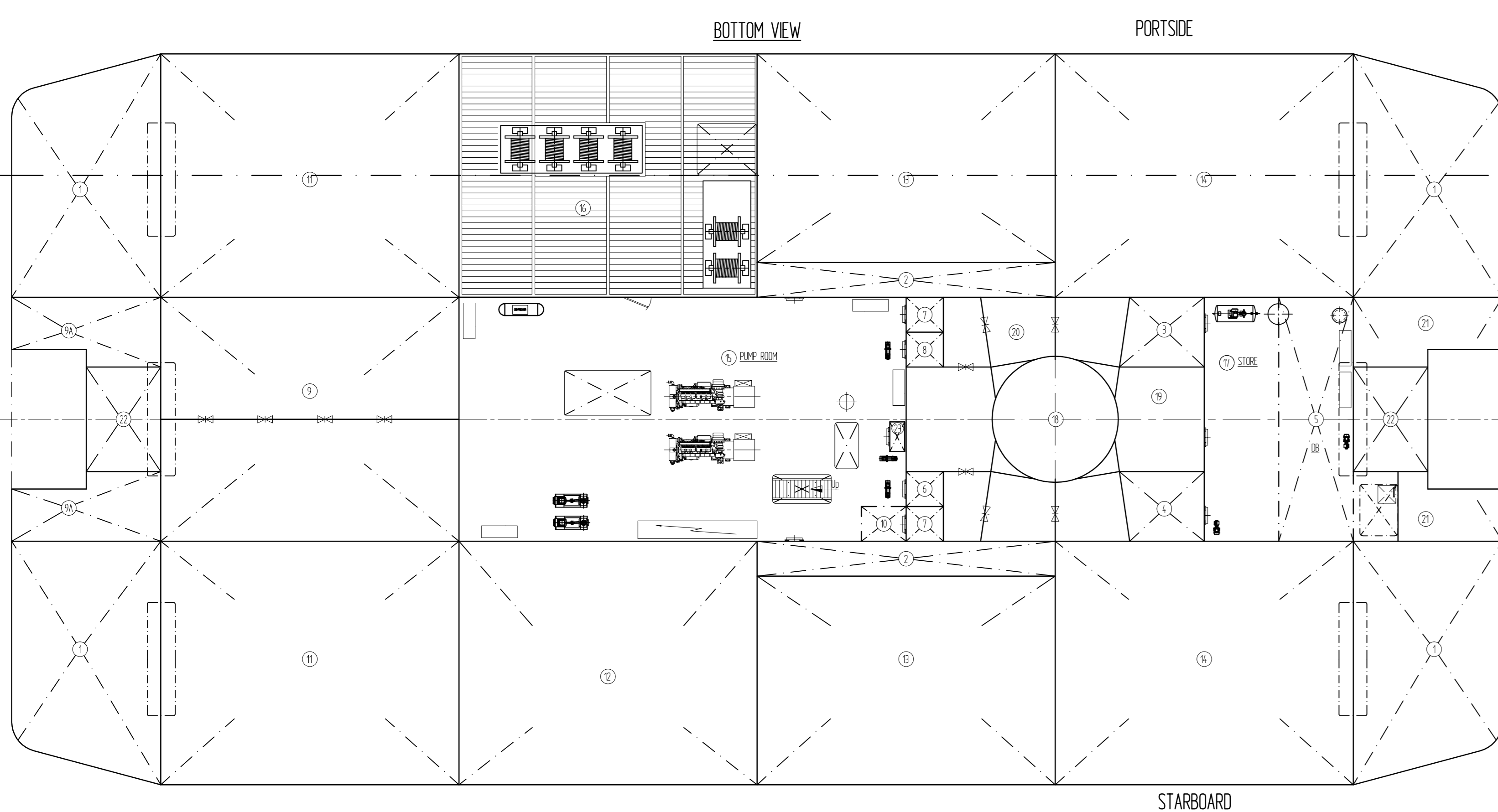
SIDE VIEW

COMPARTMENTS

①	WATER BALLAST	approx	450 m³
②	FUEL TANK	approx	2x 45 m³
③	DRINKWATER TANK	approx	24 m³
④	DIRTY WATER TANK	approx	24 m³
⑤	SEWAGE TANK	approx	19,5 m³
⑥	DIRTY OIL TANK	approx	6,5 m³
⑦	SPARE VOID TANK (each)	approx	6,5 m³
⑧	LUB. OIL TANK	approx	6,5 m³
⑨	CRANE CONTRA WATER BALLAST	approx	318 m³
⑩	CRANE CONTRA WATER BALLAST	approx	64 m³
⑪	DIRTY OIL COLLECTION TANK	approx	13 m³
⑫	DRY TANK SB & PS		
⑬	DRY TANK PS		
⑭	DRY TANK SB & PS		
⑮	DRY TANK SB & PS		
⑯	PUMP ROOM		
⑰	CABLE STORE SB		
⑱	FORWARD STORE MIDSHIP		
⑲	DRY PEDESTAL COMPARTMENT		
⑳	DRY TANK MIDSHIP		
㉑	DRY TANK MIDSHIP		
㉒	DRY TANK MIDSHIP		
㉓	CHAIN LOCKER		
㉔	FUEL OIL DAY TANK (LODSE)	approx	0,5 m³

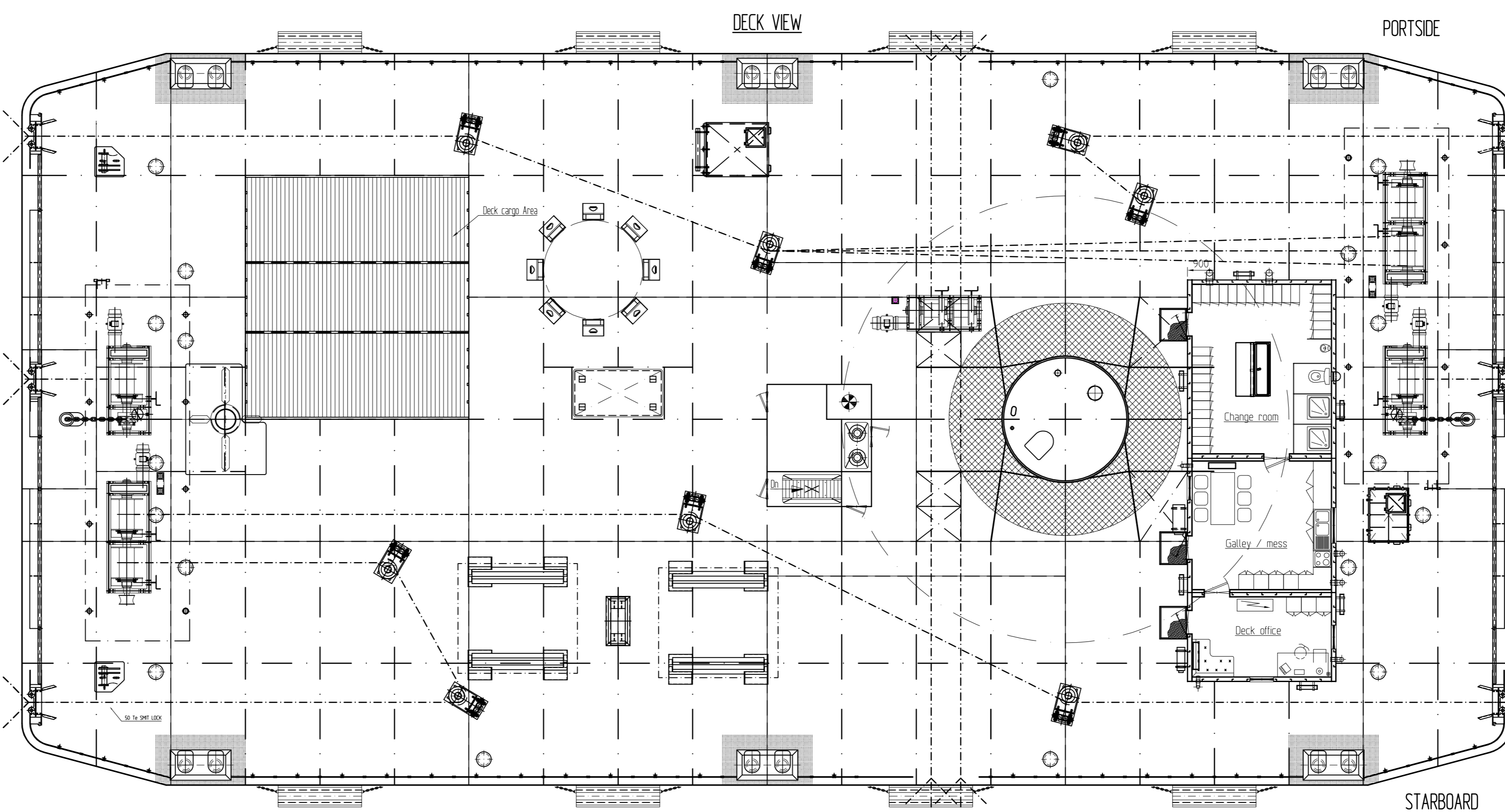


VIEW AFTER



BOTTOM VIEW

PORTSIDE



DECK VIEW

PORTSIDE

FORE

STARBOARD

STARBOARD

MAIN DIMENSIONS

LENGTH MLD	49,960m
LENGTH O. A.	50,000m
BREADTH MLD	24,530m
BREADTH O. A.	24,570m
DEPTH MLD	3,98m
DRAUGHT (Scantling)	300m
DECKLOAD	35 t/m² (deckcargo area 7 t/m²)
CLASSIFICATION	BUREAU VERITAS HULL • MACH PONTON - CRANE "COASTAL AREAS" - UNMANNED TOWED
ANCHORS	2x1500kg SPECIAL PURPOSE
CHAINS	2x250m U2 STUD LINK CHAIN CABLE ø36mm
CRANE	GOTTWALD TYPE GHPK 8200 B 50 Tn - 43 M RANGE 40 Tn - 50 M RANGE

rev	date	name	description	checked
I	26-06-2006	AR	AS BUILT	AR
H	10-04-2006	AR	Updated	G.J.E.
G	21-11-2005	AR	Pedestal bulkhead configuration modified	AR
F	24-10-2005	MS	Modifications according to meeting 20-10-2005	AR
E	05-10-2005	AR	Modifications according to meeting 04-10-2005	G.J.E.
D	30-09-2005	AR	Crane modified	G.J.E.
C	26-09-2005	G.J.E.	New crane GHPK8200 B added	G.J.E.
B	21-09-2005	G.J.E.	Modifications according to meeting dd.20-09-2005	G.J.E.
A	19-09-2005	AR	Several modifications	G.J.E.

PROJECT: **GOTTWALD PORT TECHNOLOGY GmbH**
 HEADQUARTERS: 4493111-1102-701
 TEL: +49(0)311-1102-701
 FAX: +49(0)311-1102-744
 E-mail: www.gottwald.com

DRAWING TITLE: **GENERAL ARRANGEMENT PONTOON**

RAVESTEIN B.V.
 Waddensing 11, 4643 GZ Boven
 Phone: +31 (0)477 53024
 Fax: +31 (0)477 53026
 Web: www.ravestein.nl E-mail: info@ravestein.nl

SCALE: 1:100
 DATE: Dec. 2004
 YARD: 386

Drawn	MS	checked	DR	project manager	AR	client	GOTTWALD	Drawn by	04072-00	Sheet no.	A0
-------	----	---------	----	-----------------	----	--------	----------	----------	----------	-----------	----